



natural^{led}®

Lighting for Residential
& Multi-Family Buildings



FLUSH MOUNT DISK

- Energy Star
- Dimmable
- CRI 80
- 6": 14W - 1,100 Lumens
- 12": 12W - 960 Lumens



Round or square options

CANLESS SLIM DISK LIGHT

- Energy Star
- JA8
- 5CCT - 2700K, 3000K, 3500K, 4000K, 5000K
- 4" (10W) or 6" (12W)
- Up to 900 Lumens
- Wet Location Rated



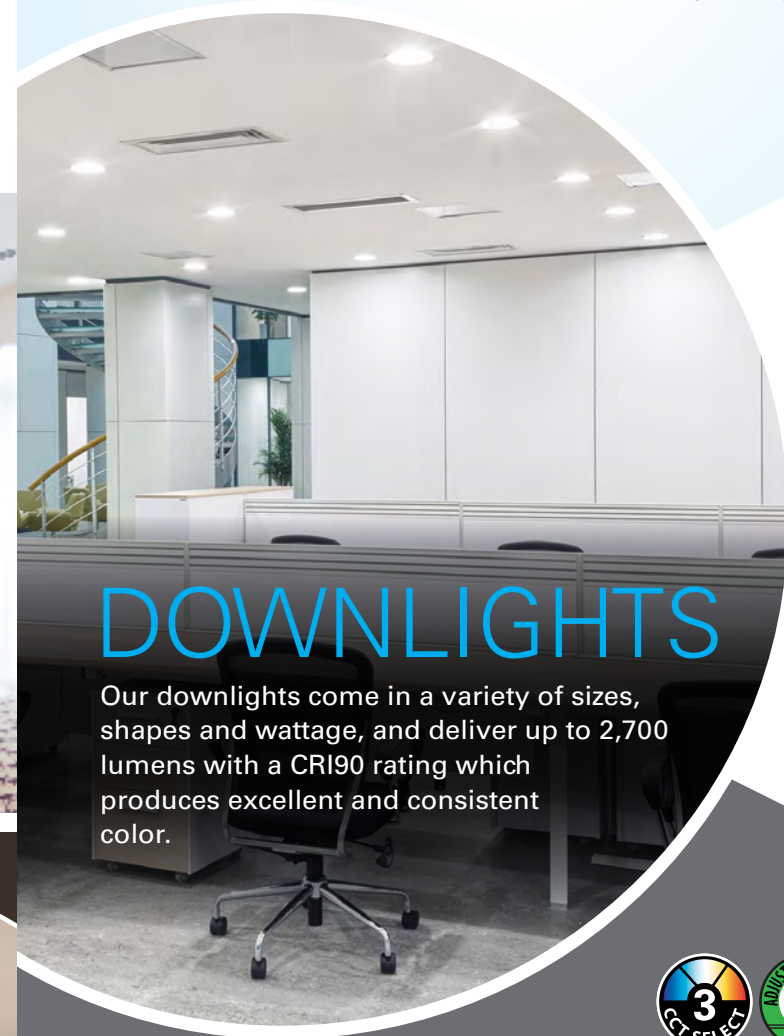
FLUSH MOUNT MODERN

- Energy Star
- Dimmable
- CRI 90
- 12": 18W - 1,260 Lumens
- 14": 24W - 1,800 Lumens
- 16": 24W - 1,900 Lumens



FLUSH MOUNT ROUND

- Energy Star
- Dimmable
- CRI 90
- 12": 14W - 1,120 Lumens
- 16": 24W - 2,000 Lumens



DOWNLIGHTS

Our downlights come in a variety of sizes, shapes and wattage, and deliver up to 2,700 lumens with a CRI90 rating which produces excellent and consistent color.



RECESSED DOWNLIGHT RETROFIT

- Energy Star Qualified
- JA8
- 5CCT - 2700K, 3000K, 3500K, 4000K, 5000K
- 4" (10W) or 6" (14W)
- Up to 1,100 Lumens
- Wet Location Rated



FLUSH MOUNT LIGHTING



OUTDOOR CEILING MOUNT

- DLC
- Dimmable: 0-10V
- 11": 20W/25W/30W - Up to 3,900 Lumens



Breezeway/ Outdoor Rated Canopy



COMMERCIAL RECESSED LIGHT

- Energy Star Qualified
- 3CCT - 3000K, 4000K, 5000K
- 6" (9/12/15W), 8" (16/21/27W), 10" (18/23/30W)
- Up to 2,700 Lumens
- Dimmable: 0-10V
- Wet Location Rated
- Accessories: Pre-Mounting Plates, T-Bar, Micro Inverter for Emergency Backup



Available in 6", 8" or 10" options



DECORATIVE ACCENT LIGHTING



VANITY LIGHT

- Energy Star
- Dimmable
- CCT: 3000K, 4000K
- 12": 23W - 1,610 Lumens
- 24": 23W - 2,000 Lumens



Pull Chain



SECURITY LIGHTING



PENDANT LIGHTING

- Energy Star
- 12" or 24" Mounting Pole
- 4.5": 18W - 1,300 Lumens



FLOODLIGHTS

- Energy Star
- 20W
- 1,400 Lumens
- CCT: 3000K, 5000K
- Built-in Motion/Photocell Sensor



UNDER CABINET LIGHTING

- JA9-2016/CEC
- CCT: 3000K, 4000K
- Available in 9" or 18"
- 3 ft. Power Cord/ Connector



WALL LIGHT

- DLC Premium
- 15W - 2,000 Lumens
- 30W - 3,950 Lumens
- Dimmable 0-10V

DUSK TO DAWN

- DLC Premium
- 30W
- 4,256 Lumens
- Dimmable 0-10V
- Surge Protection: 4KV
- Built-in Photocell





PORCH & WALL LIGHTING

The Porch Outdoor Wall Lights are wet location rated and feature a black trim.



- Energy Star
- 14W
- 1,050 Lumens
- CCT: 4000K



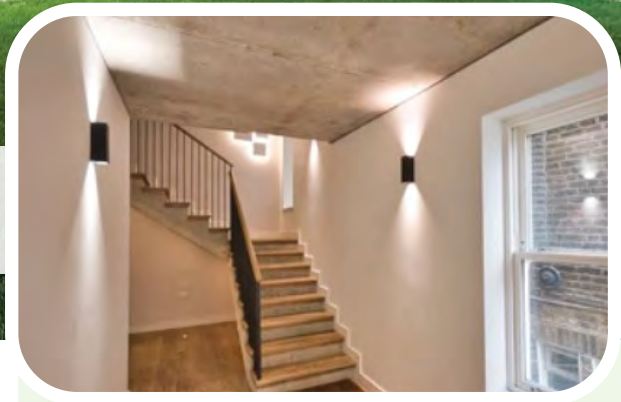
- Energy Star
- 10.5W
- 1,050 Lumens
- CCT: 4000K



OUTDOOR WALL LIGHTING



WALL SCONCES



INDOOR / OUTDOOR



BULKHEAD WALL LIGHT

- Energy Star
- 10W
- 700 Lumens
- CCT: 3000K, 5000K

DECORATIVE WALL LIGHT

- Energy Star
- 14W
- 840 Lumens
- CCT: 4000K



VAPORTIGHT JELLY JAR

- Energy Star
- 20W
- 1,713 Lumens
- CCT: 3000K, 4000K



3CCT / 3 way light switches



Finish Options:
Black / White / Nickel



- Energy Star
- Dimmable: 0-10V
- 3 Way Light: Up/Down/Full
- 20W - 2,300 Lumens
- 36W - 4,680 Lumens
- 3CCT: 3000K, 4000K, 5000K



UP Full Down

LINEAR FIXTURES



COMMERCIAL STRIP / RETROFIT STRIP

- 3CCT - 3500K, 4000K, 5000K
- 22 to 68W
- Up to 9,398 Lumens
- Dimmable: 0-10V
- Accessories: Motion Sensor, Emergency Driver



Available in 2, 4 or 8 ft. options



VAPORTIGHT



The new selectable color and selectable wattage Vapor Tight is just one of several linear lighting options from naturalLED®. Available in 2, 4 or 8 ft. options, this fixture produces up to 13,000 lumens.

Wall / Ceiling Mounting



- 3CCT - 3500K, 4000K, 5000K (except for 8 ft.)
- 20 to 100W
- Up to 13,000 Lumens
- Dimmable: 0-10V
- Accessories: Wall Mount, Motion Sensor, Emergency Driver

COMMERCIAL WRAP

- 3CCT - 3500K, 4000K, 5000K
- 22/28/34/44W
- Up to 5,720 Lumens
- Dimmable: 0-10V
- Accessories: Emergency Driver, Motion Sensor



UTILITY WRAP

- 4000K or 5000K
- 27W
- Up to 3,510 Lumens
- Dimmable: 0-10V
- Accessories: Emergency Driver, Motion Sensor





A19 LAMPS

- Energy Star
- 9W - 800 Lumens
- 12W - 1,100 Lumens
- 17W - 1,600 Lumens
- CCT: 2700K, 3000K, 4000K, 5000K
- Dimmable
- Omni-directional



REFLECTOR PAR LAMPS

- Energy Star
- 8W - 500 Lumens
- 10W - 800 Lumens
- 15W - 1,200 Lumens
- PAR20, PAR30L, PAR38



LAMPS



BR/R LAMPS

- Energy Star
- CCT: 2700K, 3000K, 4000K, 5000K
- Dimmable



PL PLUG-IN

- DLC
- CCT: 3500K, 4000K
- Universal Sockets for G24q and GX24q



REPLACEMENT LED TUBES



INSTANT FIT TYPE ATUBES



naturaLED® Instant-Fit Type AT5s and T8s make it easy to upgrade fluorescents to energy efficient LED lighting. Compatible with existing electronic fluorescent ballasts without re-wiring, the Instant-Fit tubes come in 2 ft., 3 ft., or 4 ft. lengths and improve energy savings up to 65%. These tubes generate a wide beam spread of 320° like the traditional pattern from existing fluorescent tubes.

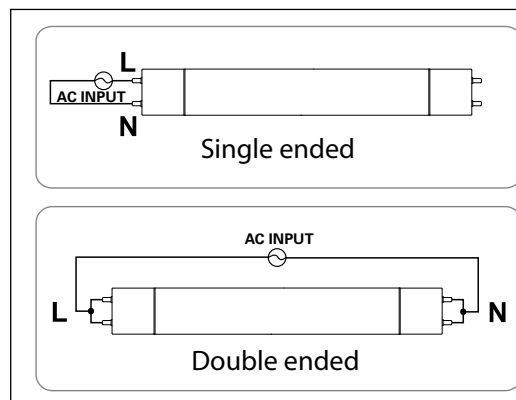
- Up to 3,500 Lumens
- 10-28W, 4000K/5000K
- Instant fit (compatible with fluorescent ballast*)
- Instant on, flicker free
- Quick and easy LED upgrade
- Contains no mercury or lead
- Base: 2, 3, 4 ft - Mini/Medium Bi-Pin

*Contact us for compatibility list.

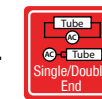
INTEGRATED TYPE BTUBES

naturaLED® LED Integrated T5/T8 UL Type B Tubes work directly with 120-277 line voltage, so it is required to remove the existing fluorescent ballast. This DLC qualified tube is available in 9-40 watts that can replace 2 ft., 3 ft., 4 ft. or 8 ft. tubes. These tubes generate a wide beam spread of 320° like the traditional pattern from existing fluorescent tubes.

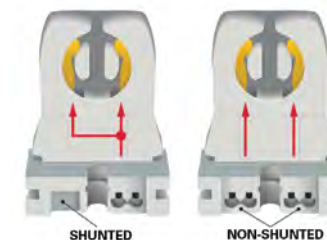
- Up to 5,500 Lumens
- 9 - 40W, 4000K/5000K
- Line Voltage 120-277V
- Instant On, Noise-free



T8 UNIVERSAL



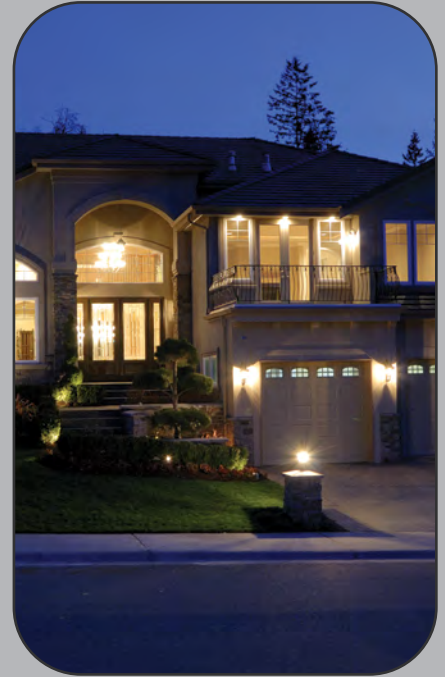
- Compatible with shunted and non-shunted sockets
- Eliminates installation labor costs for additional wiring



- Shunted sockets receive voltage through a single set of wires and spread it to two contacts.
- Non-shunted sockets send voltage to each of the contacts, through two wiring tracks.

Standard Type B Direct Wire tubes use single ended non-shunted socket, but naturaLED® Universal tubes are compatible with shunted and non-shunted, single and double ended as well.

natural[®]led



California, USA

2000 S. Grove Ave, Bldg B, Ontario, CA 91761
855-758-7009 | 909-930-6868

Texas, USA

1940 Diplomat Drive, Farmers Branch, TX 75234

North Carolina, USA

2511 Reliance Ave, Apex, NC 27539

Canada

Unit 206 – 9710 187th Street Surrey, BC V4N 3N6